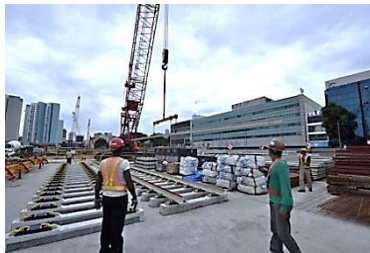
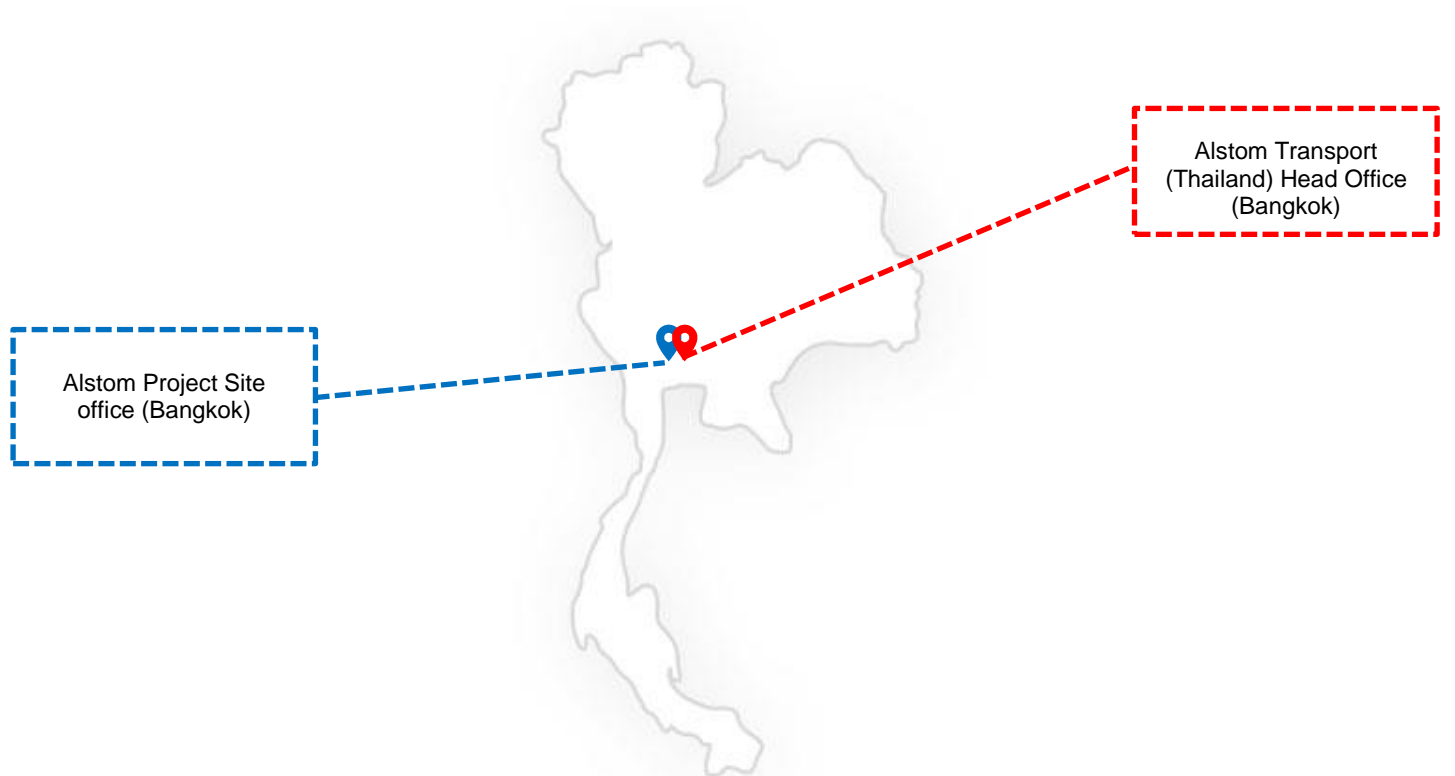


Alstom in Thailand



Alstom's Presence



Key Data:

- Alstom has been in Thailand for more than 40 years.
- Alstom currently has two offices in Bangkok and 76 employees in the country.

History

- 1973:** Established of Alstom (Thailand) Ltd.
- 1975:** Supplied 113 diesel locomotives to State Railway of Thailand (completed in 1985).
- 1992:** Recorded the first Combined Cycle Project in Thailand, Rayong CCPP.
- 2001:** Award of contract supplying ventilation tunnel and trackworks for Bangkok Blue Line of Mass Rapid Transit Authority of Thailand (completed in 2004).
- 2012:** Award of track works for Bangkok Blue Line Extension (27km) for Mass Rapid Transit Authority of Thailand.
- 2013:** Award of track works for Bangkok Green Line South Extension (12.8km) for Mass Rapid Transit Authority of Thailand.

Alstom in Thailand

2014: Establishment of Alstom Transport (Thailand) Co., Ltd.

Reference and Ongoing Projects

Currently, the major reference projects Alstom has in Thailand include:

Infrastructure

- Thailand ventilation tunnel and track works for Bangkok Blue Line of Mass Rapid Transit Authority in Thailand (2001 – 2004)
- Thailand track works for Bangkok Blue Line Extension, 27km (2012 – present)
- Thailand track works for Bangkok Green Line South Extension, 12.8km (2013 – present)

Rolling Stock

- 113 diesel locomotives to State Railway of Thailand (1975 - 1985)

Corporate Social Responsibilities

Alstom has been committing itself as a responsible company in Thailand. So far, Alstom Foundation has sponsored and supported two social projects in the country.

100, 000 Trees Plantation to Address the Deforestation

In June 2010, Alstom Foundation granted The Rajapruek Institute Foundation (RIF) around 76,000 euros to plant 100,000 trees at Amphur Tha Pla, Uttaradit Province, over a period of 18 months, in order to help reduce the severity of side effects caused by deforestation. The project was completed successfully in 2012.

Towards a Zero Waste Community Concept in Thailand

Due to the growth of economy and increased consumption amounts of solid waste, Alstom Foundation granted 50,000 euros to Thailand Institute of Packaging and Recycling Management for Sustainable Environment (TIPMSE) in 2013 to promote zero waste in schools, temples households at Ban Silong village, 40km east of Bangkok. This project was completed successfully in 2014.

Contact Information

Alstom Transport (Thailand) Co., Ltd.

118/1 U.S.A. Building 4th Floor,
Unit 4M, Vibhavadi Rangsit Road,
Chomphon, Chatuchak,
Bangkok, 10900
Tel: +66 2 840 8500
Fax: +66 2 840 8533

General/product enquiries or requests for quotation, kindly contact the local office or visit <http://www.alstom.com/locations/>

Careers at Alstom & submission of resumes, visit <http://www.alstom.com/careers/>

The contact below is exclusive for the use of the press. Non-press related requests will be disregarded.

Communications Contact: Liping Mian | liping.mian@alstom.com