

Established in the Philippines since 1984, Alstom has reinforced its presence not only in terms of commercial success and project execution but also for operational activities – through a shared services centre in Cebu that is supporting the Group’s global finance and procurement activities.

With a skilled local workforce, Alstom is fully committed to partnering the Philippines for its ambitious infrastructure development programme. It is currently upgrading two of the three existing urban mass transit lines in the capital – the Manila Light Rail Transit Line 1 (LRT-1) Cavite Extension and Manila Metro Rail Transit Line 3 (MRT-3) signalling upgrading projects.



KEY FIGURES

>400 employees

3 sites

95% local workforce

9 community projects funded by Alstom Foundation to improve local living conditions and economic prospects



INTEGRATED SYSTEM

- Upgrading and extending Manila LRT-1 with systems integration, signalling, telecommunication, traction power supply, track works and depot



ROLLING STOCK

- First generation of Manila LRT-1 trains (32 train sets)



SIGNALLING

- Signalling system for Manila MTR-3
- Signalling system upgrade for Manila MRT-3



SERVICES

- Maintenance services for Manila MRT-3 wayside and on-board signalling system



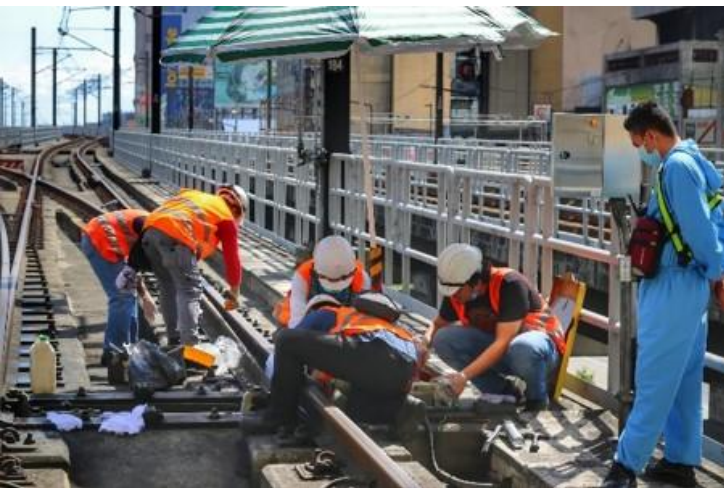
SITES

- Country headquarters and project sites in Manila
- The Group’s Global Procurement Centre based in Cebu, supporting over 20 sites across Asia Pacific, Americas and Europe in both indirect goods and services, as well as product-related procurement
- The Group’s Global Finance Centre based in Cebu, supporting accounting, reporting and controlling activities for over 20 countries across Europe and 50 legal entities

MANILA MRT-3 SIGNALLING SYSTEM

Leading the way to reducing transport emissions within the capital city

- Designed, developed and implemented the original Cityflo 250 signalling system, which commenced operations in 1999.
- Upgrading the existing 20-year-old signalling system with the most advanced Cityflo solution. The new signalling system has been successfully and timely put into passenger service on 24 October 2021.



- Responsible for supplying signalling system spare parts and training MRT-3 personnel on the system operation and maintenance.

MANILA LRT-1 CAVITE EXTENSION

Enhancing the capital's rail network reliability and capacity



- The Group's first integrated metro project ongoing in the country. Alstom will deliver a complete system including modern signalling system (ETCS Level 1), communication system, traction power supply, and track works on the 12km extended line including one new depot and the current depot extension.
- For the existing 20km line, Alstom will also equip the complete fleet of 60 trains (comprising four generations of trains) with new on-board signalling solution, and upgrade the trackside signalling system with Atlas 100 solution.

FOR MORE INFORMATION:

Alstom

Level 5, South Park Plaza
Paseo de Magallanes
Commercial Complex
Makati City 1232
Manila – Philippines
Phone: +63 2 8860777

www.alstom.com